

Making Graphs with Microsoft Excel

Make a table for the following data. Type the independent variable data in Column 1 and dependent variable data in Column 2. These are the means of the groups NOT the raw data.

EXAMPLE:

Amt. of Fertilizer(mg/l)	Average Growth of <i>Brassica rapa</i> (mm)
0	10.47
5	12.12
10	14.15
50	21.55

Click and drag to select the dependent variable column. Be sure to include the column title.

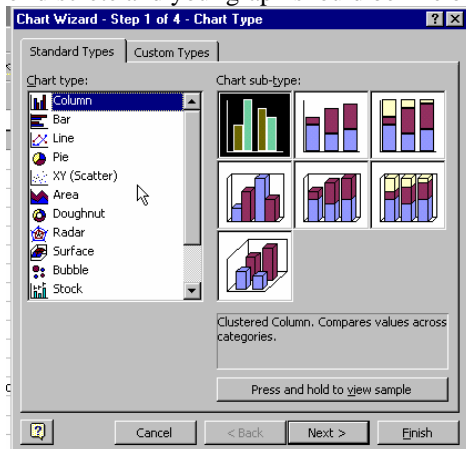
EXAMPLE:

Amt. of Fertilizer(mg/l)	Average Growth of <i>Brassica rapa</i> (mm)
0	10.47
5	12.12
10	14.15
50	21.55

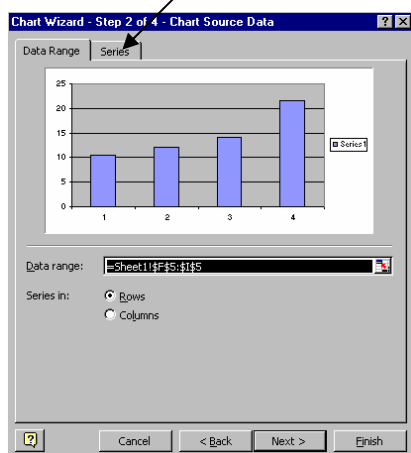
Click on the “chart wizard” in the tool bar.



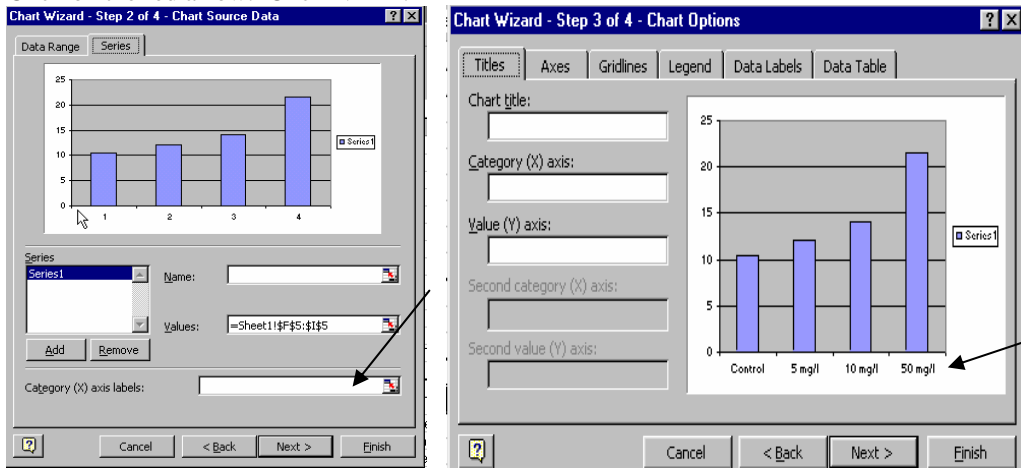
When the chart wizard starts you will be asked to select the type of graph you want. After you decide whether your data is continuous or discrete and your graph should be line or bar - click on NEXT.



Your data will then be displayed as a graph. It is now time to “dress up” your graph. Click on the “Series” tab.

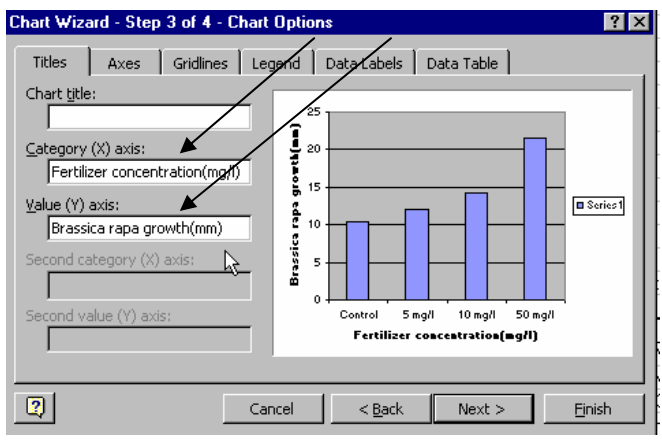


Find the “Category (x) axis labels. Click on the red arrow then click and drag to select the independent variable data to be displayed. Click on the red arrow. Click NEXT.

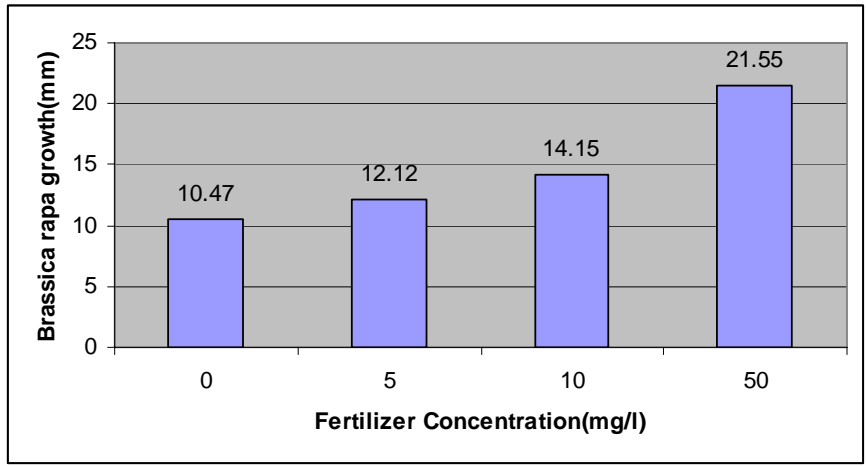


You will now see the labels on your graph!

Now you will need to type : Category (X) axis and Value(Y) axis. Do not type in title. You will add the title below the graph after you insert it into Microsoft Word(ex. Figure 4. Comparison of groups showing effects of fertilizer concentration on *Brassica rapa* growth.)



Click on the Legend tab. (remove the check mark from “Show legend”)
 Click on the Data Labels tab. (click on show value)
 Click Finish.



Select your graph by clicking on the white area. When the handles are showing you may now copy(Control-C) and paste(Control-V) into your Word document.